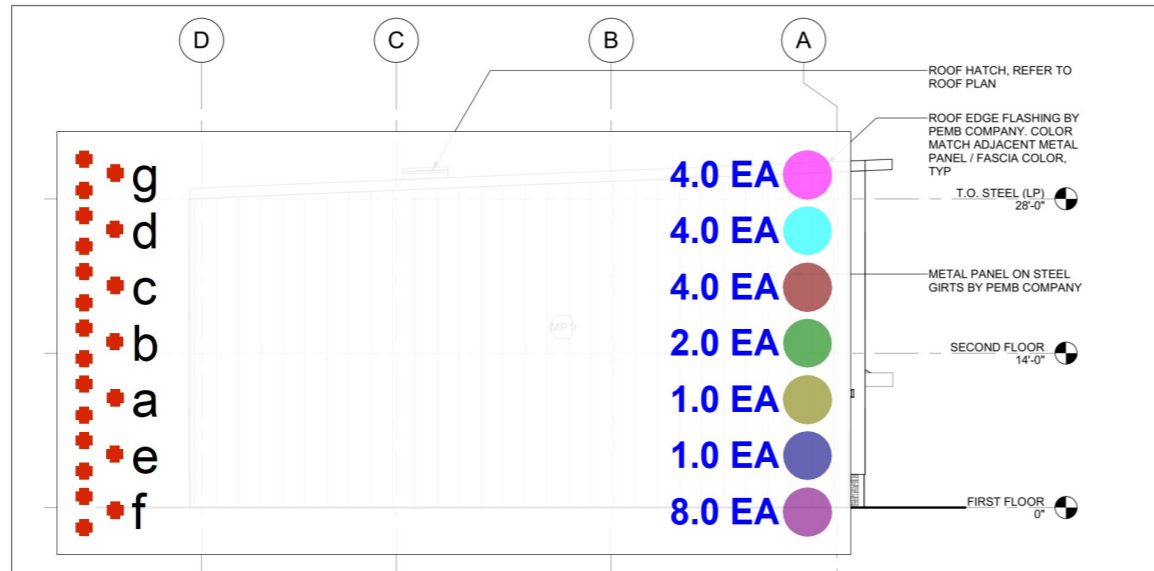
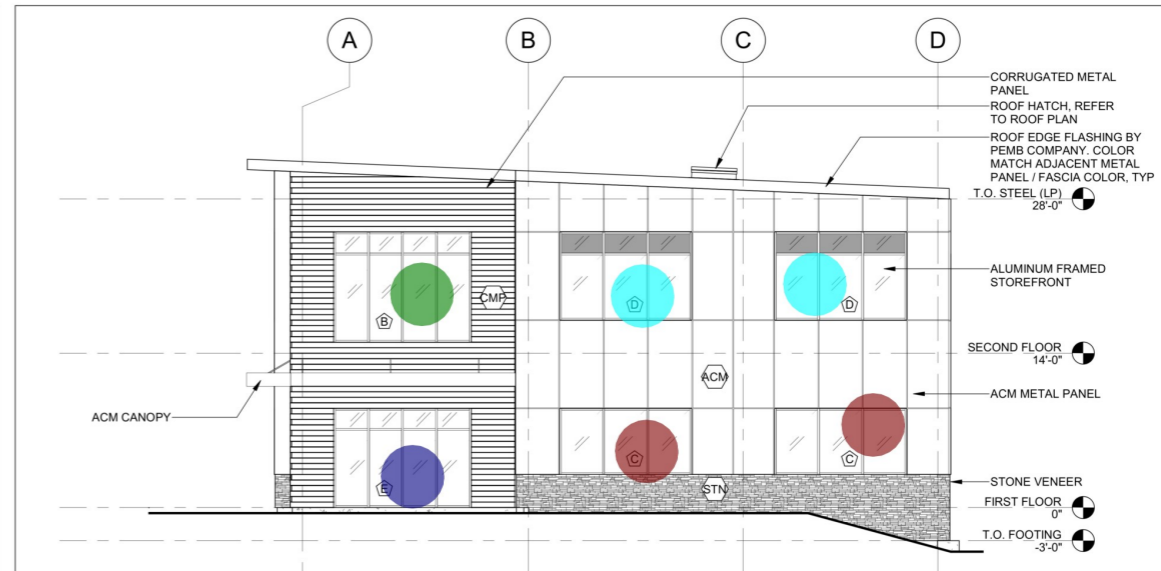


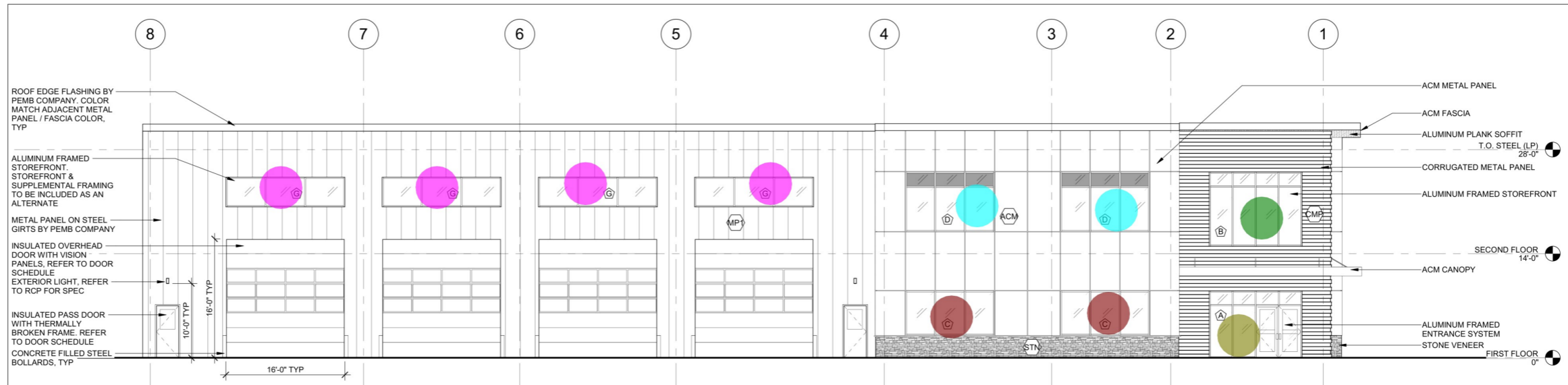
4 NORTH ELEVATION  
SCALE: 1/8" = 1'-0"



3 WEST ELEVATION  
SCALE: 1/8" = 1'-0"



2 EAST ELEVATION  
SCALE: 1/8" = 1'-0"



1 SOUTH ELEVATION  
SCALE: 1/8" = 1'-0"

**Notes:**

**EXTERIOR WINDOW FRAMING & GLAZING**

**GENERAL WINDOW NOTES:**  
 1. ALL DIMENSIONS SHOWN ON ARCHITECTURAL DRAWINGS ARE ROUGH OPENINGS. SHOP DRAWINGS SHOULD REFLECT APPROPRIATE FRAME SIZES INCLUDING JOINT SIZES PER MANUFACTURERS SPECIFICATIONS.  
 2. GC/SUB-CONTRACTOR TO FIELD VERIFY ALL OPENINGS PRIOR TO FABRICATION OF WINDOWS.  
 3. SUBMIT COLOR SAMPLES FOR FRAMES AND GLAZING AS PART OF THE SHOP DRAWING PROCESS.

**STOREFRONT SYSTEM:**  
 1. KAWNEER 451T - FRONT GLAZED  
 2. FRAME COLOR - CLEAR ANODIZED ALUMINUM  
 3. PROVIDE COMPLETE SILL PANS WITH WATERTIGHT END DAMS ON THREE SIDES. DAMS TO BE TIED INTO OPAQUE ASSEMBLY AVB WITH TRANSITION MEMBRANE AT JAMBS

**STOREFRONT ENTRANCE SYSTEM:**  
 1. DOORS: KAWNEER 350T MEDIUM STYLE, THERMALLY BROKEN W/ 1" IGU TO MATCH GLAZING COLOR G1

**GLAZING:**  
 1. ALL GLAZING TO BE LOW E-II  
 2. PROVIDE TEMPERED GLAZING IN ALL AREA REQUIRED BY CODE.  
 3. GLAZING SPECS (PILKINGTON):  
 G1: 1" INSULATED GLAZING UNIT -1/4" ECLIPSE ADVANTAGE (LOW E SURFACE #2), COLOR: ARCTIC BLUE -1/2" AIR SPACE (90% ARGON, 10% AIR WITH WARM EDGE SPACERS) -1/4" ENERGY ADVANTAGE LOW-E COATING SURFACE #4, TEMPERED WHERE REQUIRED  
 G2: 1" INSULATED ECLIPSE ADVANTAGE (LOW E) SPANDREL -1/4" ECLIPSE ADVANTAGE (LOW E REFLECTIVE SURFACE #2), COLOR: ARCTIC BLUE -1/2" AIR SPACE (90% ARGON, 10% AIR WITH WARM EDGE SPACERS) -1/4" CLEAR ANNEALED, TEMPERED WHERE REQUIRED (WARM GRAY SPANDREL COATING SURFACE #4)

**Stamp:**

Project:  
**Cassidy Landscaping Building**  
 155 Treble Cove Road  
 Billerica, MA 01862

Client:  
 Cassidy Landscaping  
 21G Olympia Avenue  
 Woburn, MA 01801

ahp Project #: 24012  
 Scale: As Noted

Issue:	Date:
Bid	07.11.2025

Revisions:	Date:

Drawing Title:  
 EXTERIOR ELEVATIONS

Sheet Number:  
**A.201**

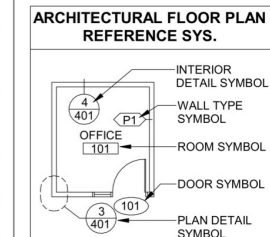
**ahp ARCHITECTS**  
 CREATIVE THINKING

116 John Street, Suite 115, Lowell, MA, 01852  
 Tel: (978) 244.1100  
 www.ahparchitects.com

THESE DOCUMENTS AND ALL LEGAL AGREEMENTS, DESIGN AND PLANS INDICATED HEREBY OR REFERENCED THEREBY ARE OWNED BY AND REMAIN THE PROPERTY OF AHP ARCHITECTS. NO PART OF THESE DOCUMENTS OR ANY INFORMATION CONTAINED HEREIN IS TO BE REPRODUCED OR TRANSMITTED IN ANY FORM OR BY ANY MEANS, ELECTRONIC OR MECHANICAL, INCLUDING PHOTOCOPYING, RECORDING, OR BY ANY INFORMATION STORAGE AND RETRIEVAL SYSTEM, WITHOUT THE EXPRESS WRITTEN PERMISSION OF AHP ARCHITECTS.

KEYNOTES	
1	PROVIDE IN WALL BLOCKING FOR WALL MOUNTED TV
2	PROVIDE F.T. PLYWOOD ON WALL FOR MOUNTING OF ELECTRICAL EQUIPMENT. PAINT TO MATCH WALL
3	PROVIDE UNISTRUT RACK FOR MOUNTING OF ELECTRICAL EQUIPMENT ALONG EXTERIOR WALL
4	DUCT SHAFT, COORDINATE SIZE WITH MEP DRAWINGS
5	PROVIDE IN WALL F.T. BLOCKING FOR TOWEL HOOKS

**Notes:**



PARTITION LEGEND	
[Symbol]	NEW INTERIOR PARTITION

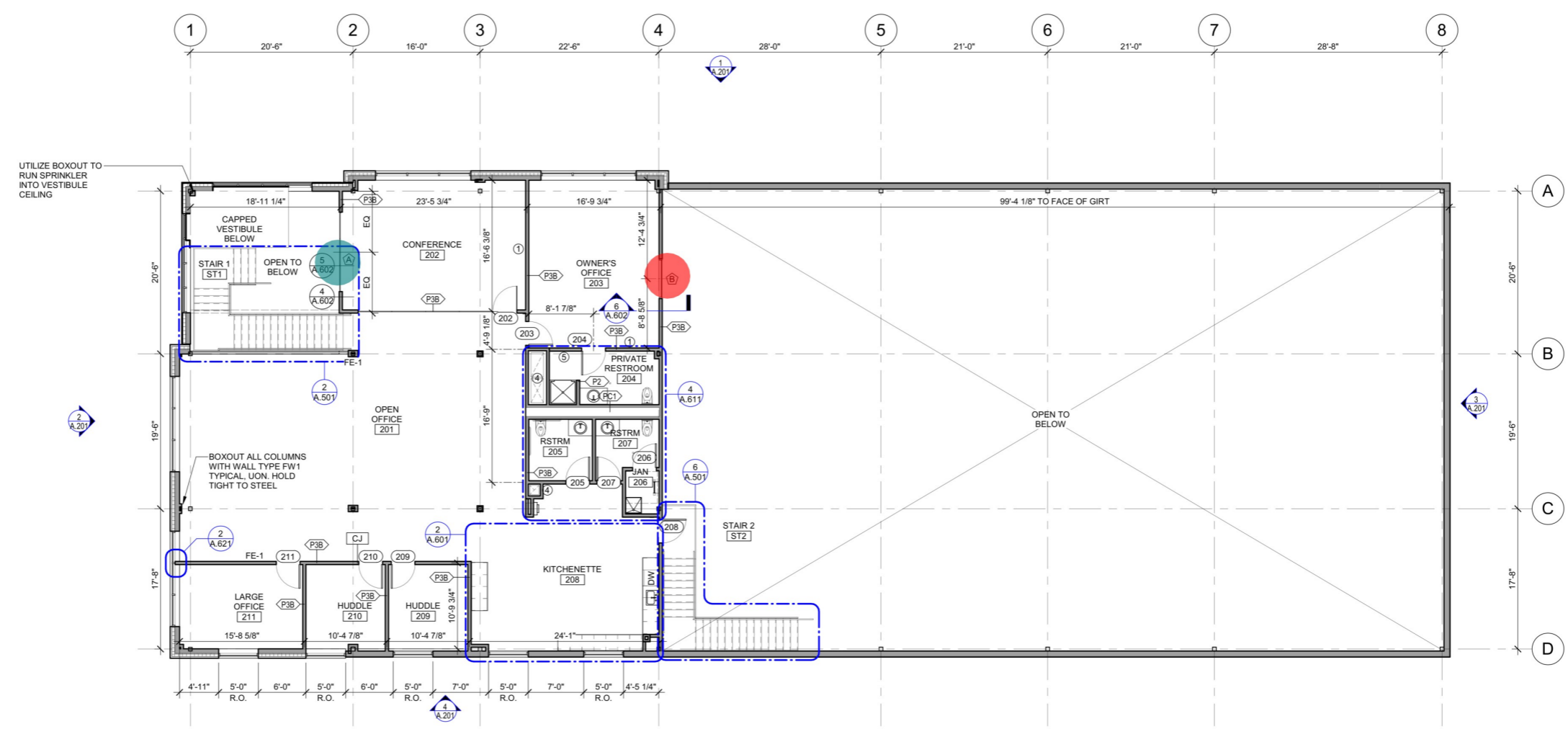
**GENERAL NOTES**  
 1. ALL WALLS NOT KEYED IN BY WALL TYPE DESIGNATION TO BE PARTITION "P3B", TYP

**DIMENSION NOTES**  
 1. INTERIOR PARTITIONS ARE DIMENSIONED TO THE CENTERLINE, UON

ABBREVIATION LEGEND	
CR	CARD READER LOCATION
MS	MOTION SENSOR LOCATION
PB	PUSH BUTTON RELEASE LOCATION
CJ	CONTROL JOINT LOCATION, REFER TO A.621 FOR DETAIL, ALIGN WITH EDGE OF DOOR/WINDOW FRAME WHERE POSSIBLE
FD	FLOOR DRAIN LOCATION, REFER TO ENGINEERING DWGS

FIRE EXTINGUISHER SCHEDULE	
FE-1	COSMIC 10LB FIRE EXTINGUISHER, TYPE ABC DRY CHEMICAL, J.L. INDUSTRIES SURFACE MOUNTED ON J HOOK; PLASTIC SIGN #24S BY J.L. INDUSTRIES TO BE MOUNTED ABOVE EXTINGUISHER AT 6'-8" AFTER FINISHED FLOORING

■ A interior 1.0 EA ●  
■ b interior 1.0 EA ●



1 SECOND FLOOR PLAN  
 SCALE: 1/8" = 1'-0"

**Stamp:**

Project:  
**Cassidy Landscaping Building**  
 155 Treble Cove Road  
 Billerica, MA 01862  
 Client:  
 Cassidy Landscaping  
 21G Olympia Avenue  
 Woburn, MA 01801

ahp Project #: 24012  
 Scale: As Noted

Issue: \_\_\_\_\_ Date: \_\_\_\_\_  
 Bid: \_\_\_\_\_ Date: 07.11.2025

Revisions:	Date:

Drawing Title:  
 SECOND FLOOR PLAN

Sheet Number:

**A.102**  
**ahp ARCHITECTS**  
 CREATIVE THINKING  
 116 John Street, Suite 115, Lowell, Ma. 01852  
 Tel: (978) 244.1100  
 www.ahparchitects.com

THIS DOCUMENT AND ALL IDEAS, ARRANGEMENTS, DESIGN AND PLANS INDICATED HEREBY OR REFERENCED TO HEREBY ARE OWNED BY AND REMAIN THE PROPERTY OF AHP ARCHITECTS. NO PART OF THIS DOCUMENT IS TO BE REPRODUCED OR TRANSMITTED IN ANY FORM OR BY ANY MEANS, ELECTRONIC OR MECHANICAL, INCLUDING PHOTOCOPYING, RECORDING, OR BY ANY INFORMATION STORAGE AND RETRIEVAL SYSTEM, WITHOUT THE WRITTEN PERMISSION OF AHP ARCHITECTS.